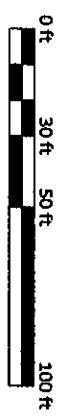


MAIN ENTRANCE

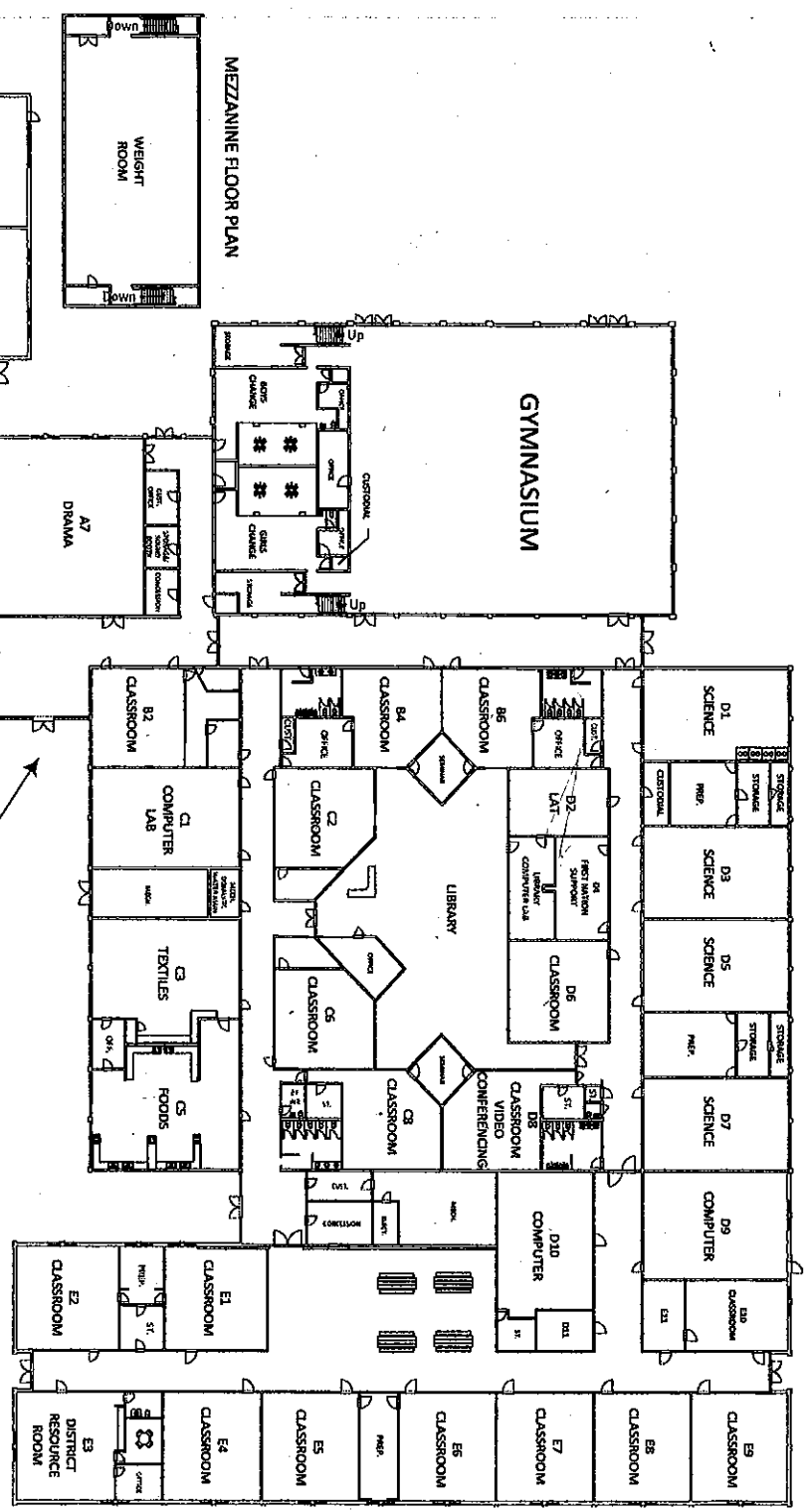


TITLE	SAMAU SECONDARY		
DRAWN BY	255 ARROWSTONE DRIVE, KAMLOOPS, BC		
REVISION	JANUARY	SCHOOL	1,800
REVISION	DATE	FLOOR PLAN	PRICE
5/22/2012			1,093

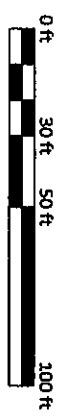


Facilities Department
965 Notre Dame Drive
Kamloops, B.C., V2C 5P6
Tel: (250) 851-4424
Fax: (250) 851-4422





MAIN ENTRANCE



TITLE		SARALI SECONDARY	
DRAWN BY		255 ARROWSTONE DRIVE, KAMLOOPS, B.C.	
CHECKED BY		JACOBSON	
DATE		FLOOR PLAN	
REVISIONS		SCALE	
25/02/02		1:800	
5/5/02		PAGE	
		1 OF 1	



Facilities Department
965 Notre Dame Drive
Kamloops, B.C., V2C 5P9
Tel: (250) 851-4424
Fax: (250) 851-4422

